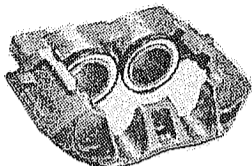


LK8815  
BRAKE ROTORS

2.50"  
TWIN  
PISTON

# FRONT DISC BRAKES B-600 FORD 1984 & NEWER

CALIPER ONLY  
Fits Right or Left  
B-600 Ford



LK7050 New  
LK7403 Reman

## BRAKE LINES & HOSES

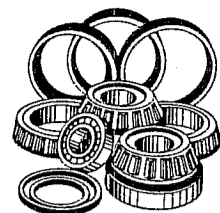


LK7620 Hoses  
LK0657 Steel Lines

GUIDE BOLT  
LK7054



For  
B-600 FORD



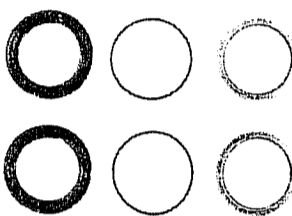
DON'T FORGET  
WHEEL BEARINGS  
& SEALS  
WE HAVE THEM!

HARDWARE KIT  
Services One Wheel  
LK7051



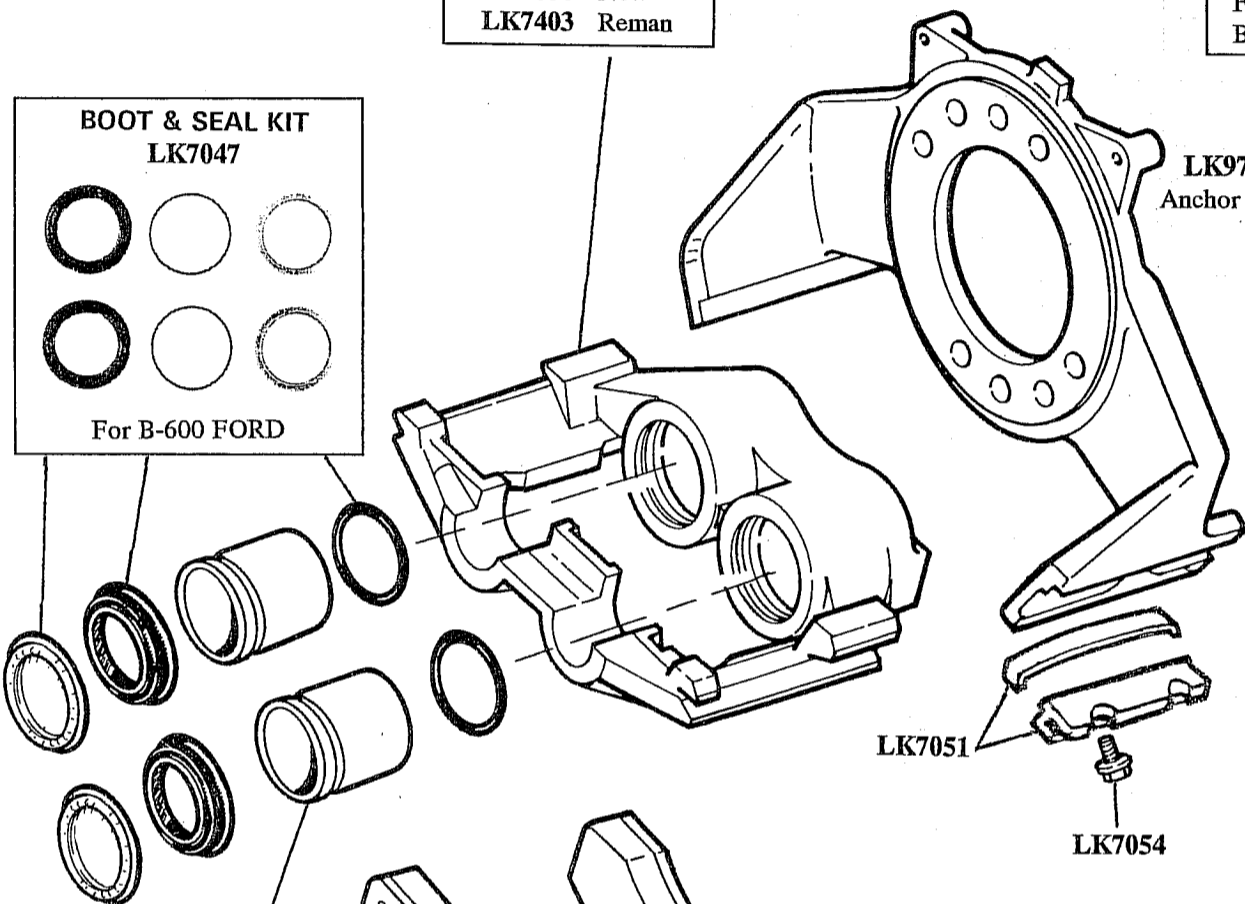
For B-600 FORD

BOOT & SEAL KIT  
LK7047



For B-600 FORD

LK9743  
Anchor Plate



LK7051

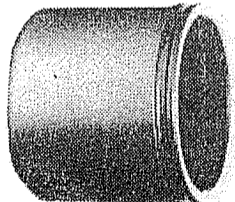
LK7054

We Offer (3) Types  
Of Disc Brake Pad Sets  
For B-600 FORD

Non-Metallic  
Semi-Metallic  
Carbon Metallic

- LK7055 Non-Metallic Pad Set
- LK7057 Semi-Metallic Pad Set
- LK7787 Carbon Metallic Pad Set

CALIPER PISTON  
LK7060  
For B-600 FORD



2.50" Dia.  
Aluminum

SPLASH  
COVER

LK9797

GREASE FOR  
CALIPER SLIDE RAILS

LK1637



14 oz.  
Tube

Correct lubrication of Caliper  
Slide Rails extends Brake Pad  
and Rotor life.

## CALIPER SHIMS

LK7090 Shim Kit

This kit will service (2) wheels.  
Included are Installation and  
Shims of various thicknesses.

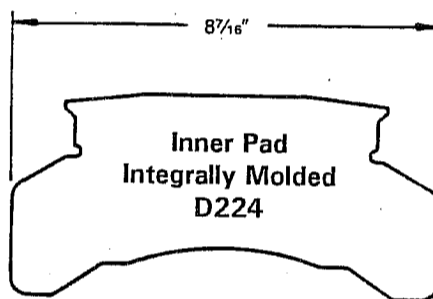
## INDIVIDUAL PARTS

- LK4657 Shim 0.037" - (1) Only
- LK4654 Shim 0.049" - (1) Only
- LK4660 Shim 0.058" - (1) Only
- LK4665 Shim 0.075" - (1) Only
- LK2530 How To Install Shim Kit
- LK4675 How To Install Caliper

The purpose of Caliper Shims is to  
adjust for Caliper Slide Rail and  
Anchor Plate wear.

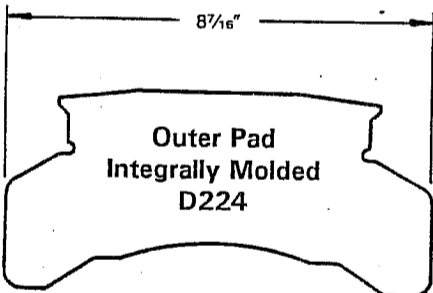
## DISC BRAKE PAD SETS

For 2.50" Dia.  
Twin Piston B-600 FORD



Inner Pad  
Integrally Molded  
D224

Pads Made With NON-ASBESTOS Material



Outer Pad  
Integrally Molded  
D224

(1) Set Consists of: (2) Outer Pads and  
(2) Inner pads

- LK7055 Non-Metallic Pad Set
- LK7057 Semi-Metallic Pad Set
- LK7787 Carbon Metallic Pad Set

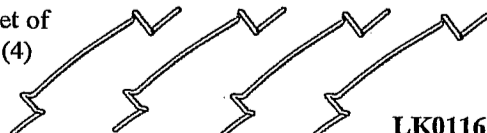
## TECHNICAL BULLETINS

- LK2587 Greasing Caliper Slides
- LK7894 Caliper Overhaul
- LK2058 Extending Caliper & Pad Life
- LK2530 Shim Kit Installation
- LK4675 Caliper Installation



## ANTI-RATTLE SPRINGS

Set of  
(4)



LK0116

These springs are designed to reduce  
rattles caused by looseness between  
the brake pads and the caliper.